



**M T I**

**Norman Y. Mineta  
International Institute for  
Surface Transportation  
Policy Studies**

Created by Congress in 1991

*College of Business  
San José State University  
San Jose, CA 95192-0219  
Tel 408/924-7560  
Fax 408/924-7565  
e-mail: [mti@mti.sjsu.edu](mailto:mti@mti.sjsu.edu)  
<http://transweb.sjsu.edu>*

**Founder**

*Hon. Norman Y. Mineta*

**Board of Trustees**

*Honorary Co-Chairs  
Congressman Don Young  
Congressman James L. Oberstar*

*Chair  
Michael S. Townes*

*Vice Chair  
Hon. John Horsley*

*Executive Director  
Hon. Rod Diridon*

*Rebecca Brewster  
Donald H. Camph  
Anne P. Canby  
Dean David Conrath  
Hank Dittmar  
William Dorey  
David Gunn  
Steve Heminger  
Celia Kupersmith  
Dr. Thomas D. Larson  
Bob Lingwood  
Brian Macleod  
William Millar  
William C. Nevel  
Hans Rat  
Lawrence Reuter  
Vickie Shaffer  
Paul A. Toliver  
David L. Turney  
Edward Wytkind*

# The World In Motion

Volume 9, No. 4

Winter 2003 - 2004

*Profile of  
**Anne P. Canby**  
Mineta Transportation Institute  
Board of Trustees Member  
and  
President  
Surface Transportation Policy Project*



Anne P. Canby is a nationally recognized leader in the field of transportation, having served in many senior policy roles for more than two decades. From 1993 – 2000, she was the Secretary of the Delaware Department of Transportation (DOT). At the Delaware DOT, she presided over dramatic changes, transforming a traditional highway agency into a multimodal mobility provider, boosting public transportation services in the state, and promoting an open, collaborative decision-making process with many new transportation constituencies.

During her career, Ms. Canby has been a Deputy Assistant Secretary of the U. S. Department of Transportation (U.S. DOT), Commissioner of the New Jersey Department of Transportation, and Treasurer of the Massachusetts Bay Transportation Authority.

Prior to serving as Delaware DOT Secretary, Ms. Canby led a consulting practice focusing on institutional and management issues with particular emphasis on the implementation of the Intermodal Surface Transportation Efficiency Act (ISTEA), the federal transportation reform law passed by Congress in 1991.

Ms. Canby has also served on the boards of numerous transportation organizations, including the Transportation Research Board, AASHTO, and the Northeastern Association of State Transportation Officials (NASTO). She is a member of the Urban Land Institute and the Institute of Transportation Engineers. She has been recognized for her leadership by the American Public Transportation Association, the Association of Metropolitan Planning Organizations, and the Delaware Chapter of the American Planning Association.

## Inside

- Research Update
- Education Program
- Directions
- Information Transfer
- Events

MTI research projects selected last fall are now underway, so of course it is time to start the process all over again. The institute released a new Request for Proposals (RFP) for the 2004-2005 projects in early January, and proposals are due on March 10.

This year the RFP took full advantage of the new Caltrans research program by including four problem statements developed in an agency-wide selection process. I worked with Caltrans staff to determine the items most appropriate for MTI, given the institute's strategic plan and areas of interest. The new RFP is available at <http://transweb.sjsu.edu/rfp.htm>.

Ongoing projects are in various stages, including two recently published (the summary proceedings of two symposia projects: the videoconference symposium conducted for junior high students on sustainable transportation and the California high-speed rail events in northern and southern California). The projects adopted in the 2002-2003 year are nearing completion, and a new cover has been designed for them and for the next annual report.



*Dr. Marc Schlossberg presented his MTI-sponsored research at the TRB annual meeting.*

Two MTI researchers made presentations at the 2004 Annual Meeting of the Transportation Research Board in Washington, D.C. in January. Dr. Marc Schlossberg of the University of Oregon discussed walkability indicators and how they could be presented in spatial format. This is an early product from his larger

study, *A Pre- and Post-Construction Analysis of Transit-Oriented Developments Using Spatial Indicators: A Case Study of Portland and Silicon Valley*. The lively discussion following his panel bodes well for the reception this work will receive when it is published this quarter. This was only one of nine presentations already completed by Dr. Schlossberg.



*Dr. Schlossberg with Research Director Trixie Johnson*



Dr. Caroline Rodier of the PATH program at UC Berkeley presented a poster on the results of her study, *Verifying the Accuracy of Regional Models Used in Transportation and Air Quality Planning*. Much depends on having accurate forecasts in the computer models used to draw up regional transportation plans, including the accuracy of the air quality plans that depend on the forecasts. Regions with impaired air quality have lost federal transportation funds because their air quality plans were based on inaccurate transportation plans. Her report is published and available on *TransWeb*. She is now engaged in the second phase of the study which will assess the accuracy of the integrated model now in use in the Sacramento region, a model she helped develop as part of an MTI team led by Bob Johnston at UC Davis.

## Information Transfer

Webmaster Barney Murray worked with Communications Director Leslee Hamilton to create a special announcement format for new publications. By adding graphics and writing the publication abstract in a promotional fashion, they entice the reader to explore the full report through a link directly to the publication. Ms. Hamilton has also expanded the reach of her snail- and e-mail announcements. One early result: the American Planning Association listed Ken Schreiber's report, *Making Growth Work for California's Communities*, on their website with a link to MTI. Many professional planners have probably visited *TransWeb* for the first time after seeing the APA announcement.

Ms. Hamilton also took charge of this year's Garret Morgan Videoconference on Sustainable Transportation, to be held on March 23. She worked with SJSU Professor Bill Hanna of the College of Education to enhance the curriculum, and added a number of other items for the updated teachers' guide and student workbook.

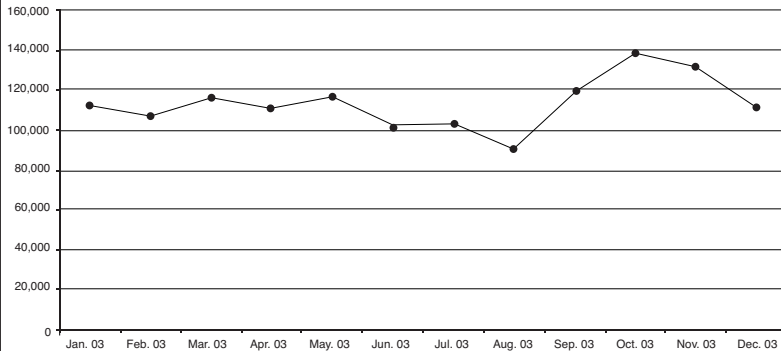


### TransWeb

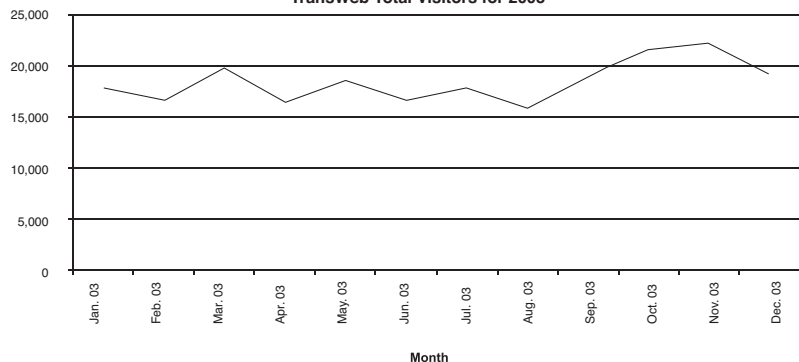
*TransWeb* continues to attract more visitors and users with truly impressive gains in virtually every measure. Comparing 2002 to 2003:

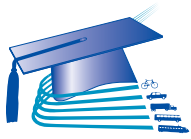
Hits are up 6.7% for a total of 1,258,516.  
Visitors are up 22% for a total of 222,533.  
Downloads are up 65% for a total of 88,142.

2003 TransWeb Year to Date Hits



TransWeb Total Visitors for 2003





### **MSTM STUDENT WINS WTS AWARD**

Jaylene Santini, whose career started as a student assistant with Caltrans, was awarded the Helene M. Overly Memorial Graduate Scholarship from the Women's Transportation Seminar (WTS). The award of \$750 was presented at the group's annual fundraising dinner in Sacramento on October 8, 2003.

### **RECENT RESEARCH ACTIVITY BY MSTM FACULTY**

Professor Robert Vitale (with co-author and former faculty member Joseph Giglierano) recently published *Business to Business Marketing*, a text designed to prepare graduate students for work in that field. Professor Peter Haas co-authored "Understanding Transit Ridership Growth: Case Studies of Successful Transit Systems in the 1990s," in the most recent Transportation Research Record, No. 1835 (with Allison Yoh and Brian Taylor at UCLA). Haas also appeared at the annual "Rail~volution" conference in Atlanta in September to present his MTI-sponsored research concerning transportation tax initiatives.



### **RICHARD ERICKSON HONORED IN WASHINGTON**

Richard Erickson, selected by the education program faculty as the MTI Master of Science in Transportation Management Student of the Year for 2003, was honored in a ceremony in Washington, D.C. in January. The Administrator of the Research and Special Program Administration was on hand to present the awards given to outstanding students from University Transportation Centers across the nation. Congratulations to Rich, who also received a check for \$1,000 at the Washington ceremony.

*Dr. Peter Haas congratulates Richard Erickson for his well-deserved Student of the Year award.*



### **NEW FACULTY MEMBER JOINS MSTM PROGRAM**

Dr. Frances Winslow, an expert in the field of emergency management, has joined the MSTM program faculty. Winslow, who currently serves as Director of the Department of Emergency Preparedness for the City of San Jose, will teach "Emergency Management Issues for Transportation Professionals" for the Spring "A" session. Dr. Winslow also works with MTI as a research associate on transportation security studies.

Responsible for San Jose's Office of Emergency Services, whose services include public education programs regarding natural disasters that may occur in the community, Winslow was named one of *Governing* magazine's Public Officials of the Year in 2002. Dr. Winslow is responsible for the development of citywide emergency plans, and oversees the San Jose's Emergency Operations Center. Dr. Winslow is a frequent speaker at conferences on emergency preparedness, including addressing the NOAA/ FEMA/ America Red Cross "Long Term Drought Conference."

Dr. Winslow has a Ph.D. in public administration, and a Master of urban planning degree from New York University; a Master's degree in political science/international relations from Drew University in Madison, New Jersey; and a Certificate in Hazardous Materials Management from University of California, Irvine. She recently completed terms on the California Seismic Safety Commission and the Hospital Building Safety Board. She has been a consultant to the Federal Emergency Management Agency, Association of Bay Area Governments, National Center for Earthquake Engineering Research, Jason Project, City of Tokyo, and City of Shizuoka, Japan.



events  
events



## High-Speed Rail Forum

MTI partnered with the Silicon Valley Manufacturing Group, Silicon Valley Chamber of Commerce, San Jose Downtown Association, and the Leagues of Women Voters of Santa Clara County to present *Rail Details: Tracking High-Speed Rail into Silicon Valley*, a forum to open discussion

*Rod Diridon, Sr., Mehdi Morshed, and Howard Goode fielded questions from the audience.*

of the newly released environmental documents for California's proposed high-speed rail system. The January 29 event marked the first time that MTI has presented a community event in the new Martin Luther King, Jr. Library, a joint facility of SJSU and the City of San José.

A standing-room-only audience heard California High-Speed Rail Authority (CHSRA) Executive Director Mehdi Morshed present an overview of the project. He was followed by CHSRA board member and MTI Executive Director Rod Diridon, Sr. who addressed the benefits to Silicon Valley, and Howard Goode, Deputy Manager of SamTrans, who spoke of the impact of the bond measure on Caltrain system upgrades.



*The high-speed rail topic generated lots of interest, resulting in a packed room.*



**MTI Board of Trustees at the January 10, 2004 meeting in Washington D.C.**

*Standing: Dr. Thomas Larson, Brian Macleod, Donald Camph, Steve Heminger, Bill Dorey, Dean David Conrath, William Nevel, Edward Wytkind, Paul Toliver, Hon. Rod Dridon*

*Seated: David Turney, Rebecca Brewster, Hon. John Horsley, Hon. James Oberstar, Chair Michael Townes, Anne Canby, William Millar.*

**Board of Trustees' Winter Meeting:** The Mineta Transportation Institute (MTI) celebrated 12 very busy and fruitful years since authorization in the Intermodal Surface Transportation Efficiency Act of 1991 during the Board of Trustees meeting hosted by the American Transportation Research Institute (ATRI) on January 10 in Washington, D.C. Special thanks to ATRI President Rebecca Brewster, who represents the trucking industry on the MTI Board.

The 21 Trustees enjoyed a detailed TEA-21 reauthorization update from House Transportation and Infrastructure Committee Ranking Member Jim Oberstar, who we appreciate for serving as our Honorary Co-chair and attending nearly all of our meetings. In addition, U.S. DOT's Jeffrey Cavanaugh, Assistant to the Secretary for Policy Coordination, provided a very complete summary of the Administration's reauthorization objectives and was followed by a strong new perspective from the new California DOT Research and Innovation Director Larry Orcutt. The message from all levels was clear; funding would be tight but research and education are important and should be focused on currently implementable solutions to the many challenges facing the U.S. transportation community. All agreed that the implication was for MTI to keep up the good work but to provide even more of it ... and, with our fine Board's continued help, we will!

**National Transportation Security Center:** With the support of the Trustees and SJSU's leadership and the encouragement of Congressman Zoe Lofgren, MTI proposed the creation of the National Transportation Security Center (NTSC) as a consortium with the University of California's Lawrence Livermore National Laboratory (for technical research) and the Naval Postgraduate School in Monterey (for education). MTI will continue to be the preeminent counter-terrorism policy research and information dissemination program in the nation and the coordinating point for the NTSC. The memorandum of understanding establishing the NTSC was signed by all parties, and the Department of Homeland Security immediately asked for two proposals on matters of urgent concern. MTI continues to evolve by thinking out of the box and working hard to make creative ideas succeed.

**Mineta Transportation Institute**  
College of Business  
San José State University  
San Jose, CA 95192-0219



Non-Profit Organization  
U.S. POSTAGE  
PAID  
San Jose, Calif.  
Permit No. 816

## The World in Motion

For more information about the  
Mineta Transportation Institute,  
call (408) 924-7560 or e-mail us at  
[mti@mti.sjsu.edu](mailto:mti@mti.sjsu.edu)