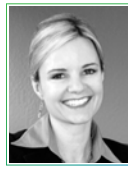


often called “a media all-star.”

Ms. Guilbault, who is fluent in Spanish, earned a BA in journalism from San Jose State University, an MA from the University of San Francisco and an MBA from Pepperdine University. She was born in Sonora, Mexico and grew up in California’s Salinas Valley.



Research Update
by Dr. Karen Philbrick
Research Director

MTI Builds Resources for Green Transportation Policy

MTI is building a resource for green transportation policy, and that collection of data is starting to grow quickly. For example, the Institute released *Greenhouse Gas Emission Impacts of Car Sharing in North America*, the results of a study that evaluated the greenhouse gas (GHG) emission changes that can occur when people participate in car-sharing organizations. The principal investigators were Dr. Elliot W. Martin, and Dr. Susan A. Shaheen.

In car sharing, people have use of vehicles typically by joining an organization that maintains a fleet of cars and light trucks, keeping them in lots located in neighborhoods, transit stations, college campuses, and the like. Members have the advantages of driving without the responsibilities of car ownership.

The research showed that, while car sharing facilitates lower emissions, the reduction cannot be generalized across all participating individuals or even a majority of those individuals. However, car sharing as a system facilitates large reductions in the annual emissions for some households, compensating for collective small emission increases of other households. On balance, net car sharing emissions are negative and statistically significant. The results also show that respondent households significantly reduced vehicle ownership after car sharing. Download the full report at no charge from <http://www.transweb.sjsu.edu/project/0911.html>.

In other green-related research, Dr. Asha Weinstein Agrawal and Dr. Hillary Nixon investigated *What Do Americans Think About Federal Transportation Tax Options? Results from a National Survey*. This report summarizes the results of a national random-digit-dial public opinion poll that asked 1,545 respondents if they would support various tax options for raising federal transportation revenues. While no option received majority support, positive responses increased 19 percentage points if the increase was linked to global warming reduction.

Another research project, *Facilitating Telecommuting as a Means of Congestion Reduction* by Dr. Nancy Da Silva and Dr. Meghna Virick, provides a deeper understanding of telecommuting patterns and adoption behavior through an examination of perceived obstacles and facilitators of telecommuting.

Other green-related projects are in the works for this year, including four that will address high-speed rail issues. As the world becomes increasingly aware of direct impacts of transportation on the environment, MTI will continue to provide peer-reviewed research reports that can become the basis for effective legislation.



Emergency Management
by Frances Edwards, Ph.D.
Deputy Director, NTSCOE

Emergency Handbook Available

MTI has published the *Handbook of Emergency Management for State-Level Transportation Agencies*. It addresses plans and systems mandated by the US Department of Homeland Security (DHS) that may help state-level transportation agencies’ disaster response systems become more efficient and effective. The book also provides specific guidance and management techniques to help emergency planning staff create DHS-compliant systems.

State transportation agencies are required to have plans for continuity of government (COG) during any catastrophic disaster, as well as for continuity of operations (COOP) – the essential services they provide during response, recovery and mitigation phases of emergency management. These augment a state’s Emergency Operations Plan (EOP), which addresses so-called “normal” emergencies.

This research project was intended to lay the groundwork for establishing priorities that would lead to a mature management capability for emergencies, disasters and catastrophes. While transportation agencies may have significant experience with so-called normal emergencies on the roadways, and they may work routinely with state police and fire agencies in disaster situations, this handbook will help them level up to meet DHS requirements.

The handbook emphasizes that open, clear and safe roadways are essential so first responders and other emergency teams can reach their destinations as fast and safely as possible. Sample chapters include “The Role of the Emergency Services Manager in a State Transportation Agency,” “The Role of the Department of Transportation Headquarters EOC,” and “The Hierarchy of Emergency Plans.”

The free handbook can be downloaded from www.transweb.sjsu.edu. Click “Research” and then “Publications.” Scroll down for access to the report.



Transportation Security
by Brian Michael Jenkins
Director, NTSCOE

Surface Transportation Attacks Are Analyzed

There has been a great deal of worldwide interest recently in terrorist attacks and serious crimes committed against surface transportation. MTI has maintained a proprietary database of these attacks, and the data are continuously updated as new information becomes available. Recently, we have drawn upon that information to produce two research reports -- *Explosives and Incendiaries Used in Terrorist Attacks on Public Surface Transportation: A Preliminary Empirical Analysis* and *Terrorist Attacks on Public Bus Transportation: A Preliminary Empirical Analysis*.

For the first report, data include the frequency and lethality with which trains, buses, and highway targets are attacked when explosives and incendiaries are used; and the relationships between fatalities, injuries, and attacks against those targets. The public bus report provides similar information, but it also includes data about how often buses are attacked relative to other surface transportation targets, the relative lethality of bus attacks, and the distribution of those attacks.

MTI’s unique database is developed from existing lists and media accounts, augmented by local sources. It provides detailed information on targets, attack methods, and the ways in which bombs and incendiaries are placed. The data help government policy makers and transportation managers understand not only what and how terrorists most often attack, but more importantly, which of their attacks are most deadly, and where their “return on investment” is the greatest. This knowledge can help governments and transit operators design the most effective security measures to counter potential attacks.

The great detail in the database has already yielded some surprising results. For example, suicide bombers, particularly when attacking trains, are not the most lethal way to deliver a bomb, and assaults with automatic weapons and land mines have been used with greater lethality for many targets than IEDs placed inside a target. These kinds of results are provided in the two reports aforementioned.

On November 12, 2009, the database contained 1,384 attacks. In the next three months, it grew to 1,648 attacks, an average of 88 per month. MTI is incorporating hundreds of attacks from the 1,700 transportation-attack entries in a chronology maintained by the RAND Corporation, which graciously provided the data to MTI. Shortly, we will have over 2,250 attacks to work with.

Final reports, with updated figures and expanded information, will be peer-reviewed and published in the coming months. The preliminary results can be downloaded at www.transweb.sjsu.edu. Click on “Security,” then “Publications.” Scroll down for access to the reports.



Communications and Special Projects Update
by Donna Maurillo
Director, Communications & Special Projects

Transportation Summits Continue

MTI continues with its successful transportation policy summits and forums. A summit in San Francisco at the Commonwealth Club put electric vehicles into the spotlight. Our speakers included Jit Bhattacharya, interim CEO of Mission Motors (electric motorcycles); Mark Duvall, a director at the Electric Power Research Institute (new uses for electric energy); Richard Lowenthal, founder and CEO of Coulomb Technologies (vehicle charging stations); and Tony Posawatz, vehicle line director for GM’s new Chevy Volt.

This is part of MTI’s efforts to bring green transportation issues to the forefront. It’s inspiring to see the innovations that American companies have made in their quest to help free us from foreign oil. In the process, we are benefiting air quality, too.

Also at the Commonwealth Club, MTI presented the second of two events addressing America’s options for generating new funds for our transportation infrastructure. Our first event in October 2009 discussed the problems and challenges. This second summit focused on creative solutions. Speakers included Bill Millar, president of APTA; John Horsley, executive director of AASHTO; and representatives from California agencies. MTI’s Dr. Asha Weinstein Agrawal presented the results of a national research study about vehicle taxes and fees.

In October, MTI was co-presenter of the Podcar City: San Jose conference at City Hall. This fourth international event brought together transportation innovators from the U.S., Sweden, Mexico, the U.K., and other countries for a three-day discussion of personal rapid transit (PRT), also known as podcars. These six-person cars, operated on guideways, can help relieve traffic congestion by providing on-demand personal transit to any number of destinations within the urban core.

Garrett Morgan Winners

MTI also held its annual Garrett Morgan Sustainable Transportation Symposium in March. Representatives of the winning team, Kemp’s Landing Magnet School in Virginia Beach VA, attended our annual awards banquet in June to receive their plaque and a \$1000 check for the classroom.

The middle-school students created a plan, including a detailed revenue analysis, for hybrid bus service in their community. They were sponsored by the Hampton Roads Transit Commission. Second place went to Morada Middle School, Stockton CA, and third place went to Riverview Middle School, Bay Point CA. Caltrans sponsored each of these schools.

Visit Us on Facebook

When you’re on Facebook, search for Mineta Transportation Institute and become a fan. We’re updating the site with news releases, commentary, and current transportation issues. And of course, there’s the MTI web site at www.transweb.sjsu.edu

MTI in the News

MTI and its research activities receive a great deal of media attention. Some of the Institute’s most recent media coverage includes the following:

- *Global Times* – December 15, 2010 – Executive Director Rod Diridon was quoted in a story about China’s high-speed rail growth. He was in China for a global conference about high-speed rail around the world.
- *Law Enforcement Examiner* – December 7, 2010 – The director of MTI’s National Transportation Security Center of Excellence, Brian Michael Jenkins, testified before the Canadian Senate regarding the current status of Al Qaeda and its terrorist activities.
- *San Francisco Chronicle* – December 3, 2010 – Rod Diridon was quoted in an article about the first segment of California’s high-speed rail, which is set for the San Joaquin Valley in Central California.
- *Emergency Management* – November 29, 2010 – MTI’s transportation security instructor Daniel Goodrich was interviewed in an article about how to safeguard America’s rail service. He said that surface transportation is much more vulnerable than airlines, so security is more challenging to railways.
- *Stanford Daily* – November 19, 2010 – MTI Research Associate Jan Botha was interviewed for an article about his research report on train suicides and accidental deaths, including the locations, times, and other factors that could indicate predictable patterns.
- *Los Angeles Times* – November 13, 2010 – Brian Michael Jenkins was interviewed for a story about the threat of cargo bombs.
- *Les Affaires Monde* – November 4, 2010 – Rod Diridon was interviewed for a Canadian article about California’s traffic problems and how congestion, in general, can be a detriment to business enterprises.
- *Silicon Valley Business Journal* – October 26, 2010 – Rod Diridon is quoted in an article about federal funding for California’s high-speed rail project.



Education Update
by Peter Haas, Ph.D.
Education Director

MTI was pleased to present 14 candidates for the Master of Science in Transportation Management (MSTM) degree at our 2010 convocation and banquet. Lisa Fabish, currently employed with Booz Allen Hamilton, was valedictorian. She also earned a nationally coveted award from the Eno Transportation Foundation, having been selected as an Eno Fellow for the 2010 Annual Eno Leadership Development Conference.

Darren Grilley, employed with SeaTac, won the 2009 CUTC Parker Award for best non-thesis paper in policy and planning, which carried a \$1,500 cash prize. He is the first MSTM student to win this national award, and we hope for more.

Two MSTM students won scholarships from the Foundation of the American Public Transportation Association last October. They are Kenneth Johannsen, employed with Caltrans, and Ernesto Chavez, employed with LA Metro.

MTI also awarded 40 Continuing Performance Fellowships for the pursuit of graduate degrees and certificates during the past academic year.

MSTM student Sarah Swensson of the Orange County Transit Authority was selected to participate in the Green Field Future of Aviation Security Workshop. The Department of Homeland Security Science & Technology and the Research Council of the United Kingdom sponsor the 2½ day workshop, which focuses on the future of aviation security. Forty young transportation professionals from the US and the UK were chosen to attend the workshop, held at the Stevens Institute of Technology (SIT) in Castle Point, New Jersey August 2-4, 2010.



Mineta Transportation Institute Photo Gallery



1.



2.



3.



4.



5.



6.

1. MTI board meeting with Sec. Norm Mineta, Bill Millar, Rod Diridon, and Mort Downey 2. Garrett Morgan competitors at the Caltrans Oakland office 3. Dr. David Steele hoods graduate Susan Heinrich, with Mort Downey 4. MTI founder, Sec. Norm Mineta, is interviewed on the radio 5. Kevin Ichikawa of Central Japan Railway with Sen. Alan Lowenthal 6. MSTM grads Nathan Atherstone, Gez Tizazu, Lisa Fabish, and Matt Sandstrom



Directions:
Rod Diridon, Sr.
Executive Director

MTI Board of Trustees Elections: Elected to two-year terms as chair and vice chair, respectively, are **Mort Downey** and **Steve Heminger**. Among many responsibilities, chair Downey served as Deputy Secretary of Transportation for the Carter and Clinton Administrations, as chair of PB Consults and, from 2004, as an MTI Trustee. Vice chair Heminger was elected to the MTI Board in 2003, is executive director of the Bay Area Metropolitan Transportation Commission, and served recently as vice chair of the national Surface Transportation Policy and Finance Commission. The new chair and vice chair follow outgoing chair **Bill Millar**, President of the American Public Transportation Association, a founding member in 1995 of the MTI Board.

In addition, five new Trustees were elected, including Parsons Transportation Group president **Tom Barron**; International Union

of Railways passenger and high speed rail director **Ignacio Barron de Angoiti**; American Automobile Association vice president **Rose Guilbault**; American Association of Railroads president **Ed Hamberger**; and Caltrans acting director **Cindy Mckim**. We are proud that these five join the current MTI Trustees to create one of the world's strongest gatherings of surface transportation leaders.

Annual Board of Trustees Meeting and Scholarship Banquet: The MTI trustees convened in San Jose on June 26, hosted in the **Silicon Valley Chamber of Commerce**. MTI founder and former Secretary of the Departments of Commerce and Transportation **Norman Mineta**, California State Senate Transportation Committee Chair **Alan Lowenthal** and Chief Deputy Caltrans Director **Malcolm Daugherty** addressed the meeting. The trustees received progress reports from the MTI department directors. Each director reported exceeding goals, with some well over 1000% beyond the strategic plan objectives as MTI looks forward to the 2011 Tier I national university transportation centers' competition. That evening, more than 300 national transportation leaders

joined the event sponsors, who donated nearly \$100,000 for scholarships, to celebrate the hooding by San Jose State University College of Business Dean David Steele of 14 new Masters of Science in Transportation Management. Valedictorian Lisa Fabish, who also won the national Eno Foundation's Leadership Award, charged the new graduates and guests with finding solutions to our transportation challenges. The event also honored Kemp's Landing Magnet School from Virginia for winning MTI's ninth annual Garrett Morgan national video-conference on sustainable transportation competition.

MTI Goes Green...er: Always heavily involved in alternative transportation modes, MTI recently inaugurated the National High Speed Rail Policy Center and continues to investigate more sustainable funding supplements to the motor vehicles fuel tax via the MTI National Transportation Finance Center directed by **Dr. Asha Agrawal**. More than two dozen related research projects are in process, and MTI conducted seven Norman Y. Mineta National Policy Summits, headed by Communications Director Donna Maurillo, on sustainability issues during the past year.

San Jose State University
1 Washington Square
San Jose, CA 95192-0219
Return Service Requested

Non-Profit
Organization
U.S. POSTAGE
PAID
San Jose, Calif.
Permit No. 816



Mineta Transportation Institute
SJSU Research Foundation,
210 N. Fourth St., Fourth Fl.,
San Jose, CA 95112-0219
Tel 408/924-7560
Fax 408/924-7565
www.transweb.sjsu.edu

Board of Trustees

Founder
Hon. Norman Y. Mineta

Honorary Co-Chairs
Congressman James Oberstar
Congressman John L. Mica

Chair
Mortimer Downey

Vice Chair
Steve Heminger

Executive Director
Hon. Rod Diridon, Sr.

Thomas E. Barron
Ignacio Barron de Angoiti
Joseph Boardman
Donald H. Camph
Anne P. Canby
Janc Chmielinski
William Dorey
Nuria I. Fernandez
Rose Guilbault
Ed Hamberger
Hon. John Horsley
Will Kempton
Cindy McKim
William Millar
Stephanie L. Pinson
Dr. David M. Steele
Paul A. Toliver
Michael S. Townes
David L. Turney
Edward Wytkind

World in Motion

Winter 2010
Volume 17, No. 1



Board Profile:
Rose Guilbault
*Vice President,
Corporate Affairs
AAA Northern
California, Nevada
& Utah*

In This Issue:

- Education Update p.2
- Research Updates p.2
- NTSOE Updates p.3
- ITT Updates p.4
- MTI Photo Gallery p.5

Rose Castillo Guilbault, one of MTI's newest Trustees, oversees all aspects of public affairs, community relations, media relations, government affairs, and traffic safety for the American Automobile Association affiliate in Northern California, Nevada, and Utah. The organization provides a broad range of insurance, travel, automotive and financial services to more than 4 million members.

Ms. Guilbault has earned her professional stripes through many years of participating in transportation issues. She is Chair of the Board for the San Mateo County Transit District (SamTrans), and she is past Chair of the Board of Governors for the Commonwealth Club of California, the nation's oldest and largest public affairs forum. Governor Arnold Schwarzenegger appointed her to the California Community Colleges Board of Governors in 2006. She also serves on the board of the University of San Francisco and the De LaSalle Institute.

With an impressive history of success and recognition for her work with diverse community projects and organizations, Ms. Guilbault was named one of the 25 Most Influential Hispanics

in the Bay Area in 2005 and 2006. For three consecutive years, 2008-2010, she was named one of the Most Influential Women in Bay Area Business by the San Francisco Times. She is the author of the critically acclaimed memoir *Farmworker's Daughter: Growing Up Mexican in America*, which the San Francisco Chronicle named one of the best books of 2005. She also was featured in the exhibit "Latinas, the Spirit of California" at the California Museum for History, Women and the Arts in Sacramento.

Among her many honors, Ms. Guilbault received the Eleanor Roosevelt Humanitarian Award from the San Francisco United Nations Association, she was inducted into the San Mateo County Women's Hall of Fame, and she was named a "Woman Who Could Be President" by the San Francisco League of Women Voters. In 1991, she was appointed to a Presidential Commission on Educational Excellence for Hispanic Americans.

Earlier in her career, Ms. Guilbault served as editorial and public affairs director for KGO TV, the ABC network affiliate in San Francisco. In 1978, she was awarded an Emmy for Outstanding Achievement in Children's Specials, and she was